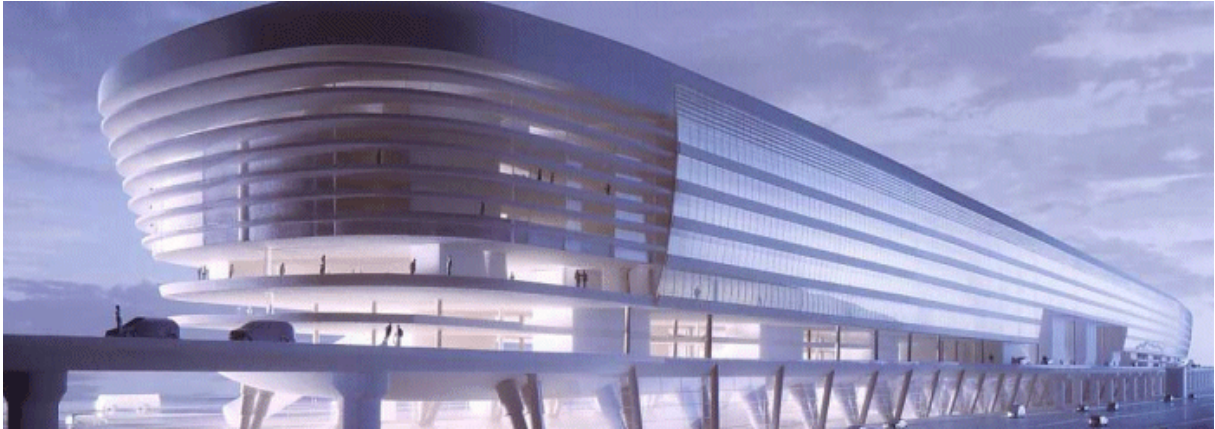


AIRRAIL center frankfurt



picture: JSK international Architekten und Ingenieure GmbH

project:	new construction of commercial space, hotel and office building
location:	Flughafen Frankfurt am Main
services SMV:	project management
client:	AIRRAIL center frankfurt Verwaltungsgesellschaft mbH & Co. Vermietungs KG, Frankfurt am Main
architects:	J.S.K. Architekten, Frankfurt/Main
building costs:	ca. 332 Mio. EUR
duration of service:	2000 – 2003
responsible:	Dr.-Ing. Rainer Schofer Dipl.-Ing. (FH) Christian Wernicke
object features:	
site:	construction site is the sprandel-braced plate above the main line station Frankfurt Airport
gross floor area::	ca. 210 000 m ²
gross volume:	ca. 670 000 m ³
parking:	980 parking places on 2 levels n